

A modern glass skyscraper is the central focus, partially obscured by a semi-transparent teal overlay. The building's glass facade reflects the sky and surrounding structures. To the left, a brick building with rectangular windows is visible. At the bottom, storefronts for 'Wrangler', 'ARMANI', and 'Footlock' are partially seen. The entire image is framed by a thin white border.

# SULIT

TAKE A STEP INTO THE FUTURE

BUSINESS SPACES





## ABOUT Us

Shree AmthiNath Developer LLP formerly recognised as Ashray Group was founded in 1979 by Shree Nathabhai Magandas Patel in Ahmedabad.

Possessing over 4 decades of experience in the field of construction, Shree Amthinath Developer LLP has developed itself as one of the pioneer companies in Ahmedabad with its hallmark projects across Ahmedabad.

# SULIT



Always deliver  
more than expected

SULIT



## OUR USP

Experience of constructing over 24 projects, building around 1800 Units and 1.80 Million of Built Up Area.

Group Ensures Superior Quality by Superior Finishes, detailed and transparent project scheduling, estimation and timely completion of its Projects.

# SULIT



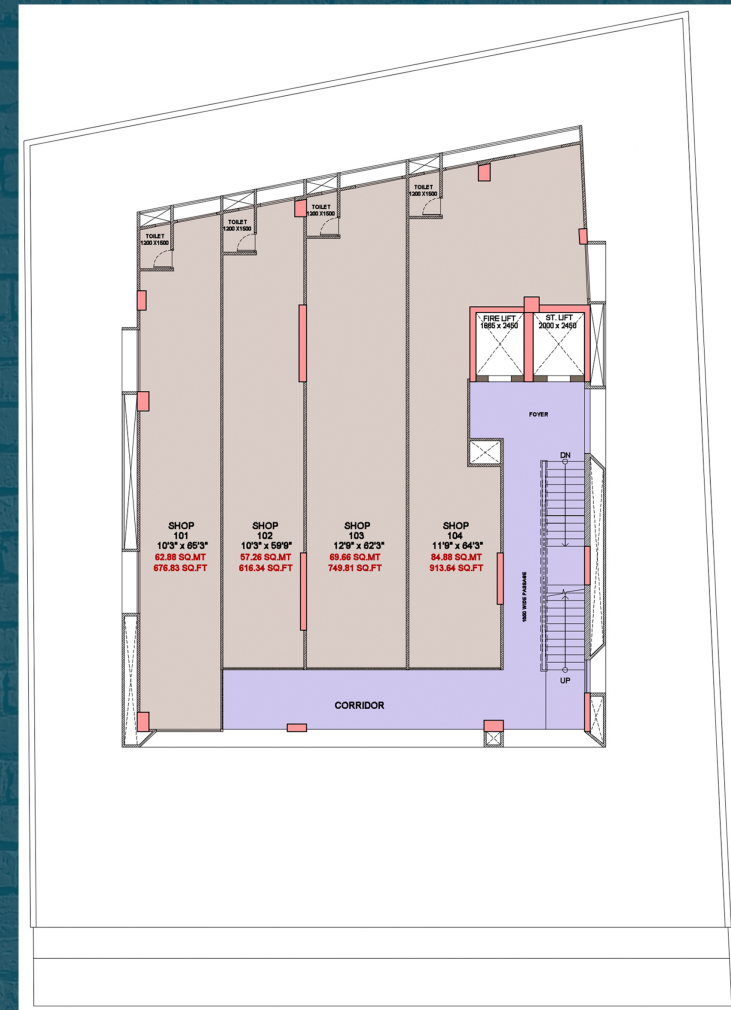




## GROUND FLOOR PLAN



## 1ST & 2ND FLOOR PLAN



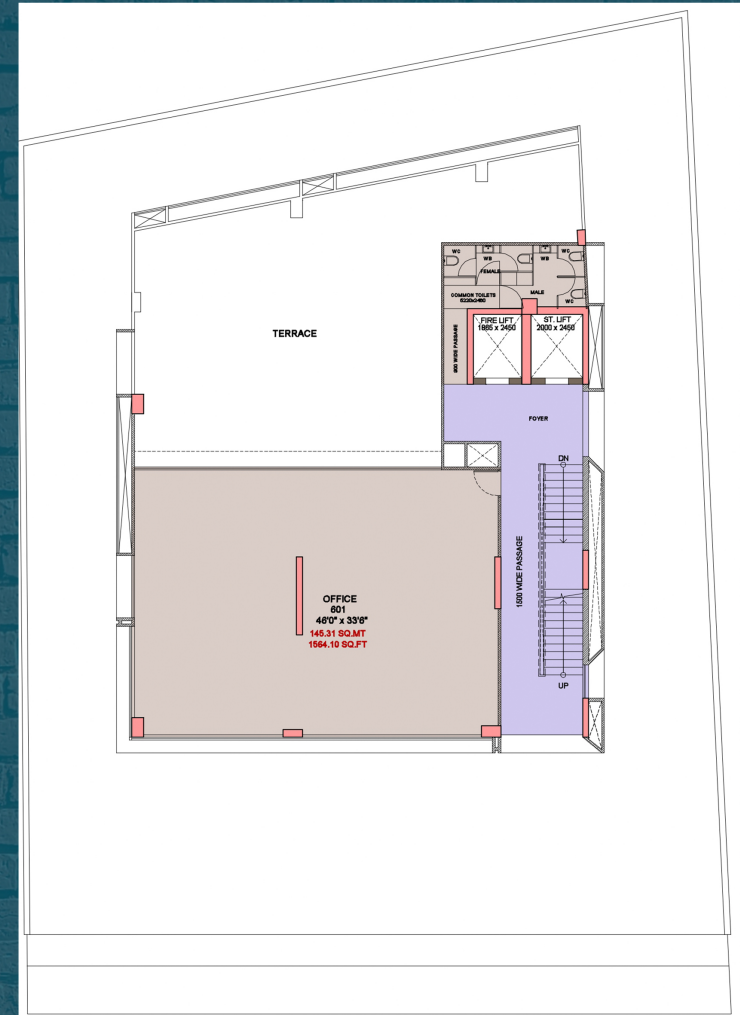




## 3RD, 4TH & 5TH FLOOR PLAN



## 6TH FLOOR PLAN





## SPECIFICATION

- Earthquake resistant RCC framed structure.
- Get hassle free parking with triple stack.
- Elegant flooring.
- High-end elevators.
- Executive toilet attached to each office spaces.
- 24/7 uninterrupted water and electric supply.
- Exclusive signage spaces for showrooms.
- Energy efficient common led lighting.
- 24/7 security services and CCTV.

# SULIT

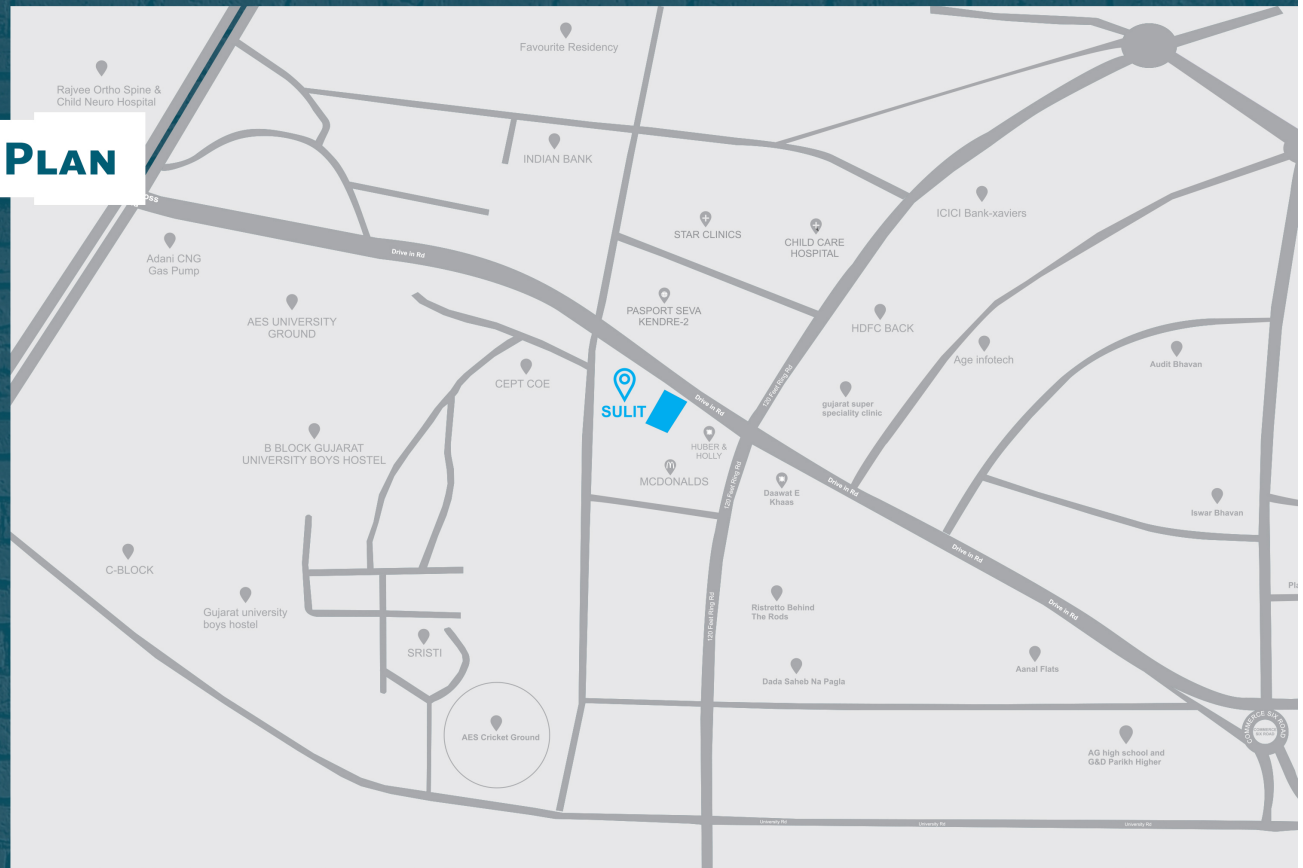
## RULES & REGULATIONS

1. Stamp duty, registration charges, legal documentation charges, GST, maintenance charges and electrical charges shall be borne by member separately.
2. Any additional charges or duties levied by government / local authority during or after the completion of the scheme will be borne by the member.
3. Internal and external changes shall not be permitted.
4. Polluted business is not allowed in premises.
5. Irregular payment may lead to cancellation of booking.
6. Any change directed by organizer will be binding to all members.
7. This brochure and model are not part of any legal documents.
8. All the dimensions / Measurements given are unfinished and approximate.
9. The photographs & artist impressions are for reference.
10. Subject to Ahmedabad Jurisdiction.



# SULIT

## KEY PLAN



### PROJECT BY

Shree Amthinath Developer LLP  
+91 98250 28012  
079 2286 8784

### EMAIL

shreeamthinath@gmail.com  
info@shreeamthinath.com

### SITE OFFICE

Shree Amthinath Developer LLP  
Opp. Passport Seva Kendra,  
Nr. Vijay Cross Road,  
Memnagar, Ahmedabad-380052

### REGISTERED OFFICE

Shree Amthinath Developer LLP  
D-2, Dream Plaza, Sardar Patel  
Chowk, Camp Road, Shahibaug,  
Ahmedabad-380052

### ARCHITECT

FLXBL  
Design Consultancy Pvt. Ltd.  
www.flxbl.in

**RERA - PR/GJ/AHMEDABAD/AHMEDABAD CITY/  
AUDA/CAA08639/170621**





[www.shreeamthinath.com](http://www.shreeamthinath.com)