



a project by

**site:**  
Chandkheda Fire Station Road,  
Nr. Savita Greens Party Plot, TP-44,  
Chandkheda, Ahmedabad - 382424

**for more details:**  
+91 98250 28012 / 079 2286 8784

**regd. office:**  
**Shree AmthiNath Developer LLP**  
D-2, Dream Plaza, Sardar Patel Chowk,  
Camp Road, Shahibaug,  
Ahmedabad - 380004, Gujarat, INDIA.

shreeamthinath@gmail.com  
info@shreeamthinath.com

www.ashrayserene.in  
www.shreeamthinath.com

**architect:**  
**FLXBL**  
Design Consultancy Pvt. Ltd.  
+91 982 442 3333  
www.flxbl.in

---

ashray  
**serene**  
3 bhk luxurious apartments

---

## lay your head back in serenity

---

Envisage an abode that lets you take a pause, stop and look around at the little joys that make this life worthwhile. It gives a reason to sit and lay back. Lay back quietly and swift into serenity to cherish, embrace and relish those offerings of life that free, but without whom you wouldn't discover life to the fullest. Come and embrace every flavor of gratification.

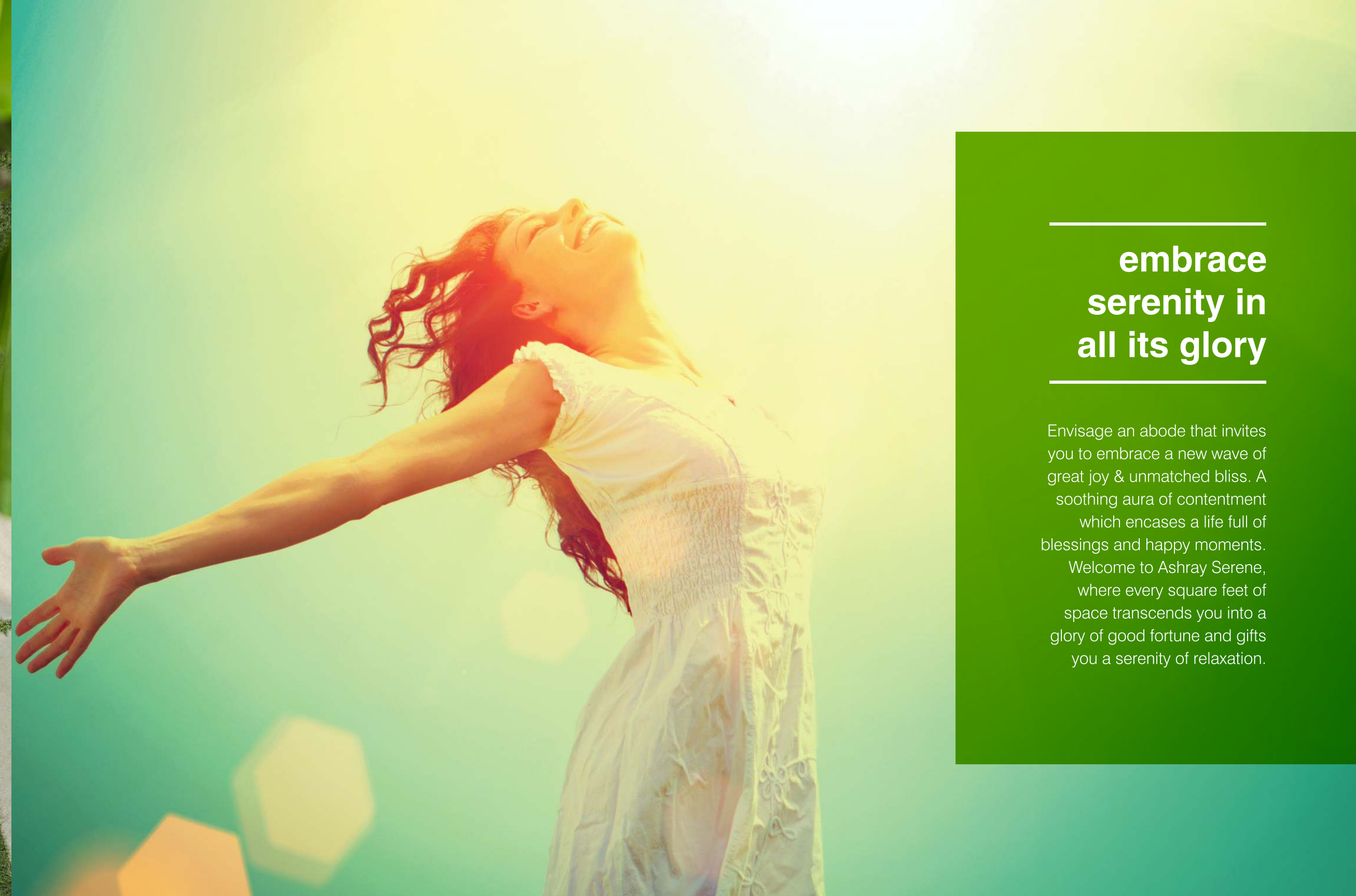


---

## embrace serenity in all its glory

---

Envisage an abode that invites you to embrace a new wave of great joy & unmatched bliss. A soothing aura of contentment which encases a life full of blessings and happy moments. Welcome to Ashray Serene, where every square feet of space transcends you into a glory of good fortune and gifts you a serenity of relaxation.





---

## cherish serenity and harmony

---

Envisage an abode where your expectations will be not only be met, but will be surpassed beyond all limits. Live in a home which will be a priceless possession you will leave behind for your children. Live in a home that will nurture all the dreams of you and your family. Where togetherness will be a recurring, and happiness will be multiplying. Ashray Serene - a home where you wouldn't just exist, you will live.



---

## experience serenity and warmth

---

Envisage an abode where you will find life blooming beyond the conventional four walls of the house. Where you will find life in the smiles of loved ones, happiness will echo from the sounds of laughter, and your only regret will be why you didn't come to live here sooner. Give your family the best gift of all - A Life at Ashray Serene.





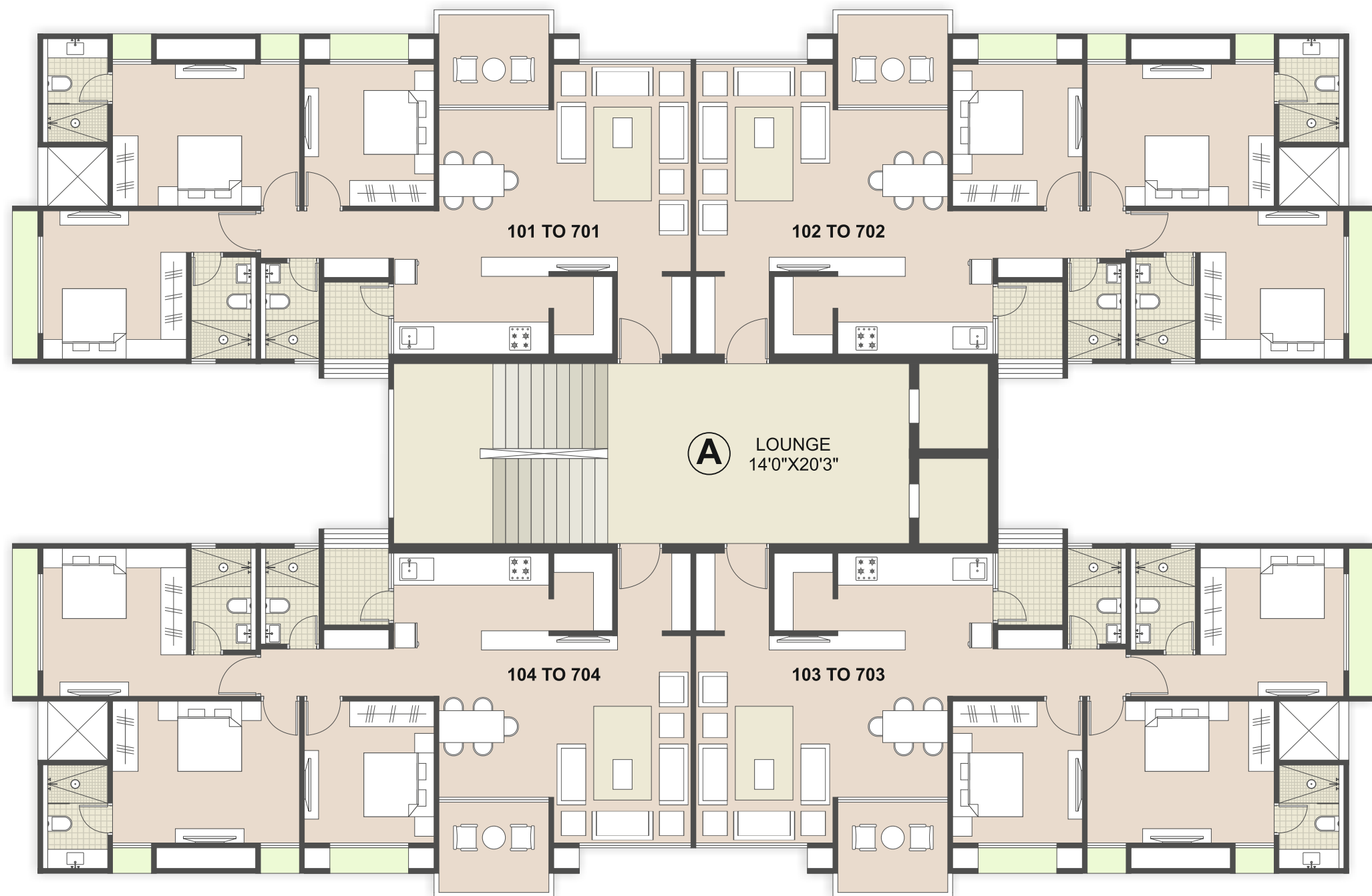
## ground floor plan



## typical floor plan

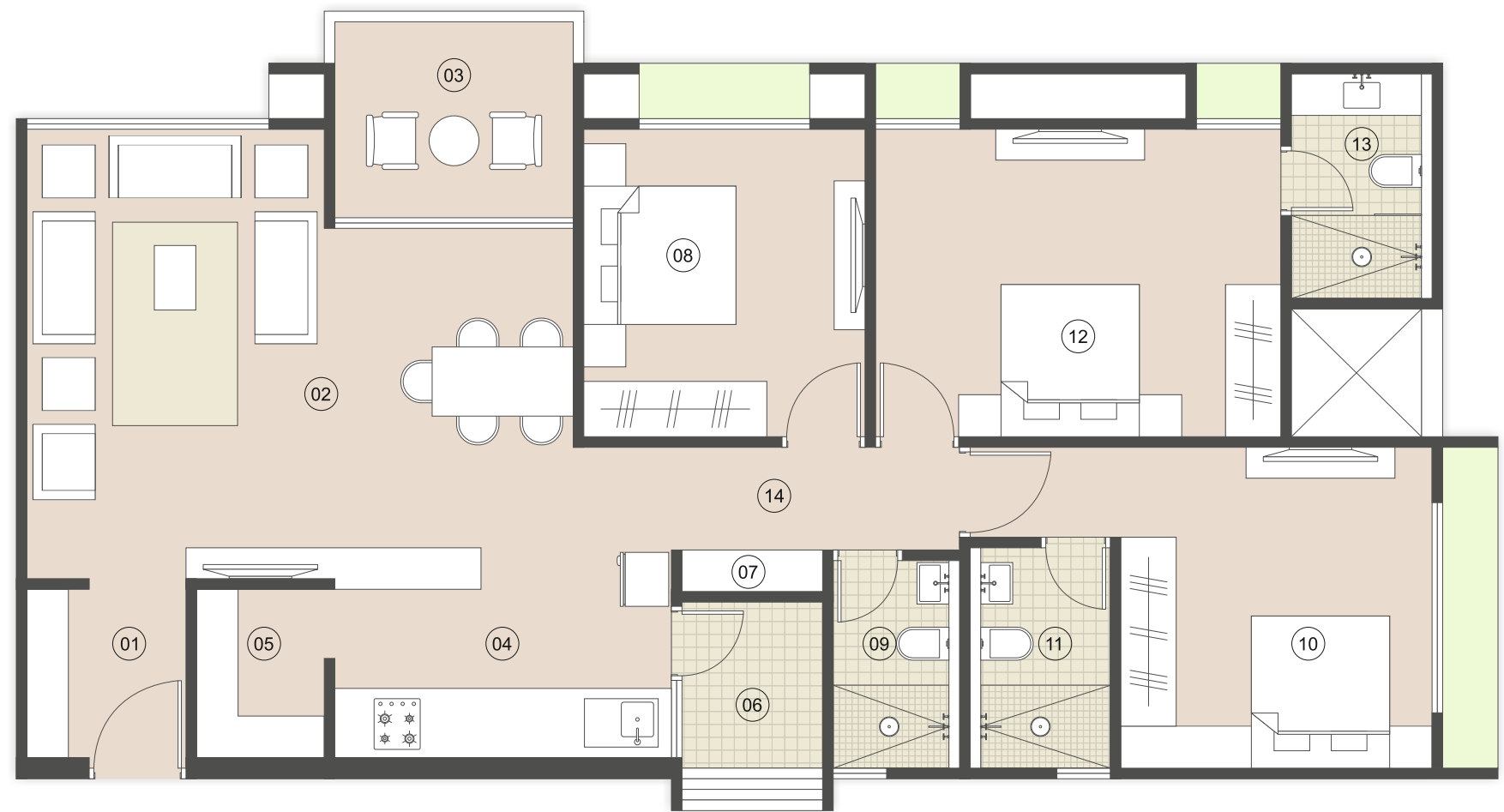


# cluster floor plan



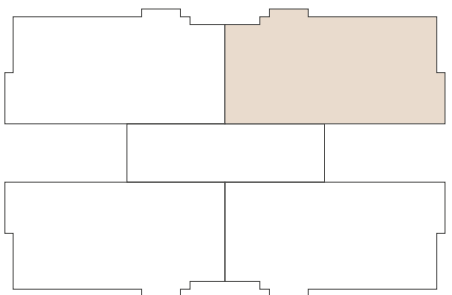
# 3 bhk

Carpet + Wall Area: 111.23 SQ MT (133.03 SQ YD)

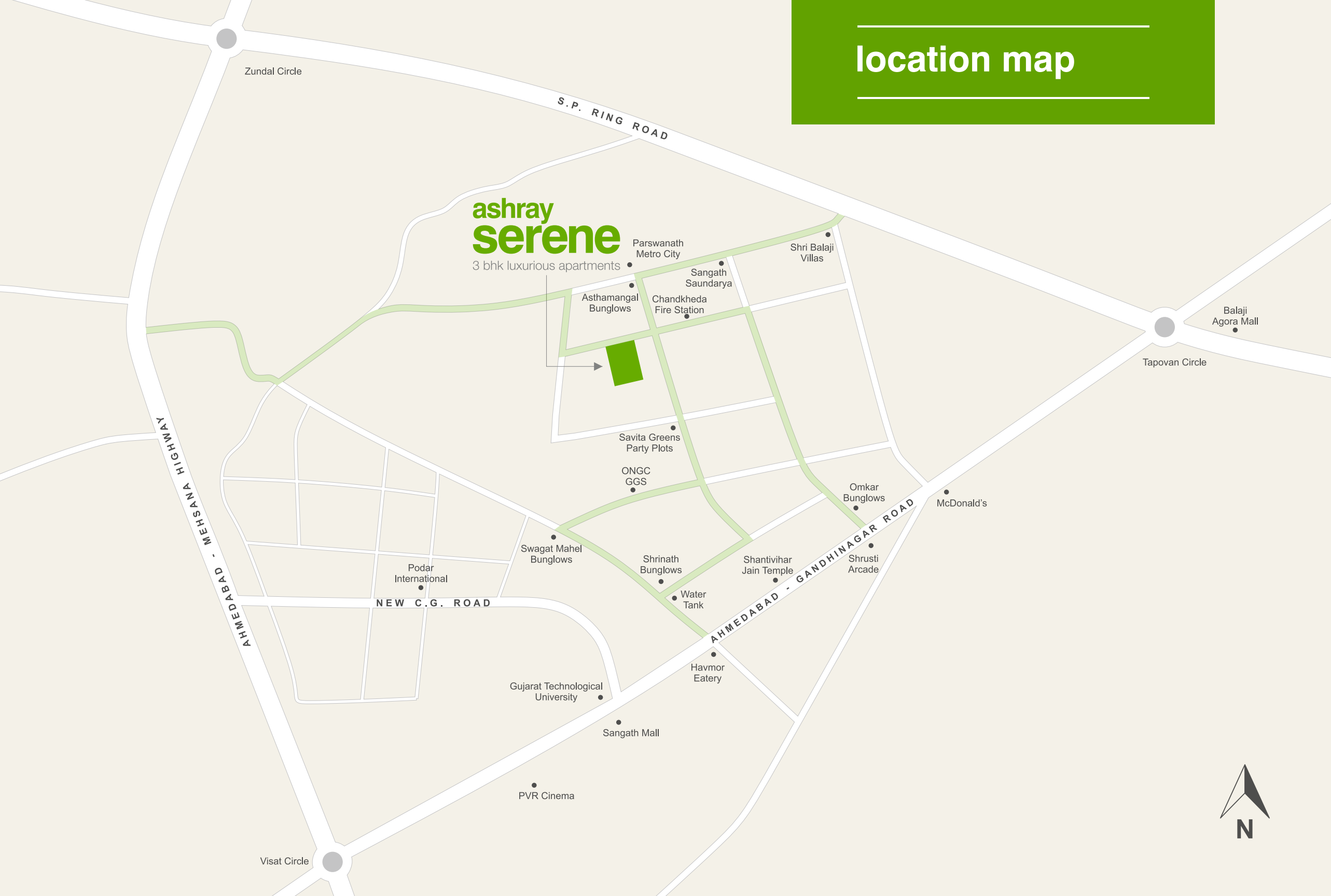


## ROOM LEGENDS

01	Vestibule	5'9"X6'0"	08	Bedroom - 1	10'0"X11'0"
02	Living / Dinning	19'6"X16'0" / 12'6"	09	Toilet -1	4'6"X7'6"
03	Balcony	8'6"X7'0"	10	Bedroom - 2	11'0"X11'6"
04	Kitchen	12'0"X7'9"	11	Toilet -2	5'0"X7'9"
05	Store	4'7"X6'0"	12	Bedroom - 3	14'6"X11'0"
06	Wash Area	5'0"X6'6"	13	Toilet - 3	5'0"X8'0"
07	Wash Basin	5'9"X1'6"	14	Passage	3'6" Wide



## location map



## specifications

### wall finish:

- Internal smooth finished mala plaster with putty
- Exterior double coated mala plaster with texture finish with acrylic paint

### flooring:

- Vitrified flooring in living, dining areas, kitchen and all bedrooms

### kitchen:

- Polished natural granite platform with stainless steel kitchen sink
- Ceramic glazed tile dado up to lintel level on wall above kitchen platform

### doors:

- Decorative main door with wooden frame & night latch lock
- All other doors are 30 mm thick flush door with oil paint

### windows:

- Anodized aluminum sliding windows with stone jambs

### bathrooms:

- Ceramic tile flooring in all bathrooms
- Coloured glazed tiles dado up to lintel level in all bathroom
- Cera or equivalent sanitary ware
- Jaguar or equivalent C.P. fittings
- Supreme or equivalent make corrosion free & leak proof CPVC/UPVC pipe fitting

### electrification:

- Three phase concealed ISI copper wiring with modular switches & adequate points like AC points in bedrooms, geyser points in bathroom, TV and telephone points in drawing room. Points for RO, washing machine & refrigerator.

### elevator:

- Premium quality 2 automatic elevator in each block



## salient features:

- Exposed concrete finish in living and dining area
- Well designed entrance foyer
- Common area under CCTV surveillance
- Provision for satellite TV connection
- All internal roads of RCC
- Pattern designed stone paving

## common amenities:

- Well equipped health club
- Children play area with sand pit
- Multi-purpose activity room
- Well designed landscape garden and pleasant sit outs
- Children drop off zone
- Two free allotted car parking



Shree AmthiNath Developer LLP formerly recognised as Ashray Group was founded in 1979 by Shree Nathabhai Magandas Patel in Ahmedabad.

Possessing over 4 decades of experience in the field of construction, Shree AmthiNath Developer LLP has developed itself as one of the pioneer companies in Ahmedabad with its hallmark projects across Ahmedabad.

### Our USP

- Experience of constructing over 24 Projects, building around 1800 Units and 1.80 Million of Built Up Area.
- Group Ensures Superior Quality by Superior Finishes, detailed and transparent project scheduling, estimation and timely completion of its Projects.

### NOTES:

- All rights are reserved with the developer for any changes in plan & specification.
- GEB, AUDA, Stamp Duty, Legal Charges, VAT, Service Tax, Labour Cess, Narmada Water Connection & Initial Maintenance Contribution will be levied extra.
- Change in external elevation shall not be permitted. Internal changes shall be done only with prior permission and shall be charged extra in advance.
- Details & dimensions in brochure are indicative & for the tentative representation only, which should not be treated as a legal document.
- Possession of the apartment shall be given only after full payment.
- Any additional charges or duties levied by the Govt/Local Authorities during or after the completion of the scheme will be borne by the purchaser.
- Subject to Ahmedabad Jurisdiction.